

Chatillon

LG Series Mechanical Force Gauge

Specification Sheet

SS-LG-0210

February 2010

The CHATILLON® LG Series mechanical force gauge is ideal for a wide range of force testing applications. Based on our popular DPP Series force gauge, the LG Series features a larger, 2.25-inch dial for improved resolution and readability, peak hold button, ergonomic shape and improved accuracy of $\pm 0.5\%$ of full scale. The LG gauge is an excellent, economical solution for tensile or compression testing.

The durable, plastic housing fits naturally in the hand for a comfortable and firm grip even at maximum loads. Gauges may be mounted to a test stand for even greater control and consistent results in repetitive testing applications. Easy to read concentric dial measures clockwise only. Dial rotates 360-degrees for taring. A peak hold button captures peak readings and can be easily and quickly returned to zero. A mechanical overload feature protects the gauge from damage. Available in lbf, kgf or N units of measure. LG Series gauges come complete with protective carrying case and a set of stainless steel attachments. A Certificate of Calibration with Data is supplied standard.

Features

- Three Graduation Styles
 - LBF
 - KGF
 - Newtons
- Tensile (Pull) and Compression (Push) Testing
- Peak Load Switch
- Tare Ring
- Intrinsically Safe
- NIST Calibration with Data
- 2 Year Warranty

Specifications

Accuracy:	$\pm 0.5\%$ of Full Scale
Overload Capacity:	110% of Rated Capacity
Maximum Overload:	150% of Rated Capacity
Tare Capacity:	10% of Rated Capacity
Dial Resolution:	0.5% of Full Scale
Deflection (Full Scale):	10mm (.394 inches)
Operating Temperature:	40°F to 110°F 5°C to 45°C
Instrument Weight:	1.5 lbs (0.68 kg)
Shipping Weight:	8.4 lbs (3.80 kg)



Quality Assured.

AMETEK® | **Chatillon®**
Force Measurement

Visit us on the worldwide web:
www.chatillon.com

Ordering

Dial Style - LBF

Model	Capacity
LG-002	2 x 0.01 lbf
LG-005	5 x 0.025 lbf
LG-080	80 x 4 ozf
LG-010	10 x 0.05 lbf
LG-020	20 x 0.1 lbf
LG-030	30 x 0.15 lbf
LG-050	50 x 0.25 lbf
LG-075	75 x 0.375 lbf
LG-100	100 x 0.5 lbf

Dial Style - KGF

Model	Capacity
LG-1KG	1 x 0.005 kgf
LG-2KG	2 x 0.01 kgf
LG-3KG	3 x 0.015 kgf
LG-5KG	5 x 0.025 kgf
LG-10KG	10 x 0.05 kgf
LG-20KG	20 x 0.1 kgf
LG-30KG	30 x 0.15 kgf
LG-50KG	50 x 0.25 kgf

Dial Style - N

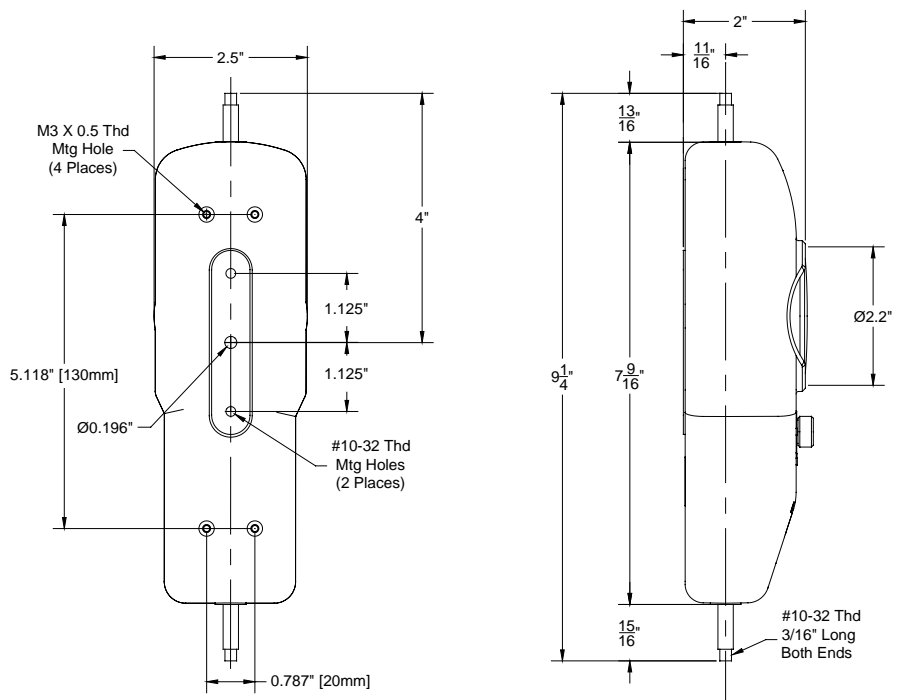
Model	Capacity
LG-10N	10 x 0.05 N
LG-20N	20 x 0.1 N
LG-30N	30 x 0.15 N
LG-50N	50 x 0.25 N
LG-100N	100 x 0.5 N
LG-200N	200 x 1 N
LG-300N	300 x 1.5 N
LG-500N	500 x 2.5 N

Standard Accessories

Part No.	Description
SPK-FMG-012A	Hook, Low Capacity
SPK-FMG-012B	Hook, Medium Capacity
SPK-FMG-008A	Chisel Point Adapter
SPK-FMG-009A	Point Adapter
SPK-FMG-010A	Notch Adapter
SPK-FMG-011A	Flat Adapter
SPK-FMG-013A	Extension Rod
NC002710	Carrying Case

Optional Accessories

Part No.	Description
SPK-FMG-HANDLE	Handle Assembly



E96-328
LG GAUGE SERIES

AMETEK

MEASUREMENT & CALIBRATION TECHNOLOGIES

For the authorized Chatillon Distributor or Manufacturer's Representative near you, go to www.chatillon.com

Americas
AMETEK
Measurement & Calibration
Technologies
8600 Somerset Drive
Largo, Florida 33773
United States of America
Tel +1-727-536-7831
Tel +1-800-527-9999
Fax +1-727-539-6882
Email chatillon.fl-lar@ametek.com

United Kingdom
Lloyd Instruments Ltd.
Steyning Way
Bognor Regis
West Sussex
PO22 9ST
United Kingdom
Tel +44 (0) 1243 833 370
Fax +44 (0) 1243 833 401
Email uk-far.general@ametek.co.uk

France
AMETEK S.A.S.
Rond Point de l'Epine des Champs
Buro Plus - Bat. D
78990 Elancourt
France
Tel +33 (0)1 30 68 89 40
Fax +33 (0)1 30 68 89 49
Email general@lloyd-instruments.com

Germany
AMETEK GmbH
Rudolf-Diesel-Strasse 16
D-40670 Meerbusch
Germany
Tel +49 (0)2159 9136-70
Fax +49 (0)2159 9136-39
Email info@ametek.de

Singapore
AMETEK Singapore Pvt. Ltd.
10 Ang Mo Kio Street 65
#05-12 Techpoint
Singapore 569059
Tel +65-6484-2388
Fax +65-6481-6588
Email aspl@ametek.com.sg

Visit Us on the Worldwide Web at:
www.chatillon.com

© 2010 by AMETEK, Inc.

Information within this document is subject to change without notice.

ISO 9001/2000
ISO/IEC17025
Manufacturer